



Financial Wellness

Consultations, Resources, and Tools



- **ComPsych FinancialConnect**
Guidance on a broad range of topics such as debt management, budgeting, estate planning, and tax planning.



- **Fidelity Investments & TIAA**
Meet with a certified financial planner and access additional education.



Legal Services

Unlimited Access



- Free and unlimited consultations from a full staff of legal experts on a range of topics including:
 - Divorce
 - Adoption
 - Estate planning
- Unlimited phone consultations
- Referrals to local attorneys (25% fee discounts)
- Information on low-cost and no-cost legal options

Relocation Services

COMPSYCH®
GuidanceResources® Worldwide

ABOVE & BEYOND
RELOCATION SERVICES, LLC



- **ComPsych Relocation**

Customized rental searches, neighborhood profiles and community packets, moving checklists, pre-screened referrals to moving companies and repair services .

- **Above & Beyond Relocations Services**

Ideal for those looking for a real estate agent; provides relocation resources.

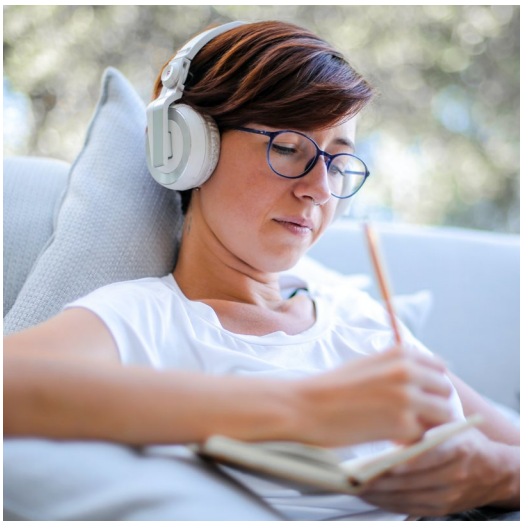
Mental Health

Employee Assistance Counseling



- Free, confidential short-term counseling
- Benefits-eligible employees
 - Dependents and household members
- 12 counseling sessions
- Statewide network of providers
- Multiple languages and translation services
- 24/7 access to support

Call [877-327-2362](tel:877-327-2362) ([TTY: 800-697-0353](tel:800-697-0353))





Schedule an Overview

Empower Your Employees

Book today!

lifework@arizona.edu